

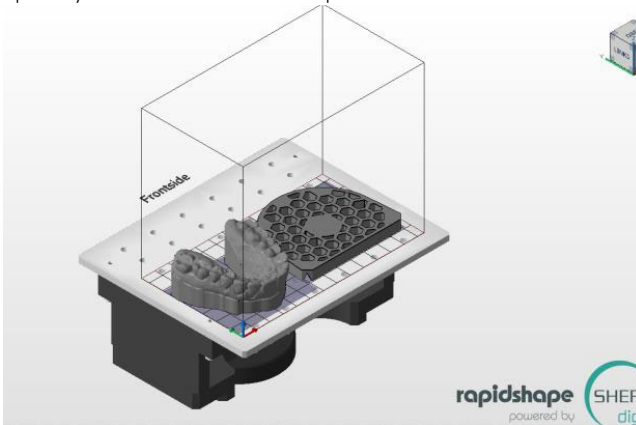
SHERAprint-plate

INSTRUCTIONS FOR USE

Support for combining model and SHERAprint-plate in different software systems

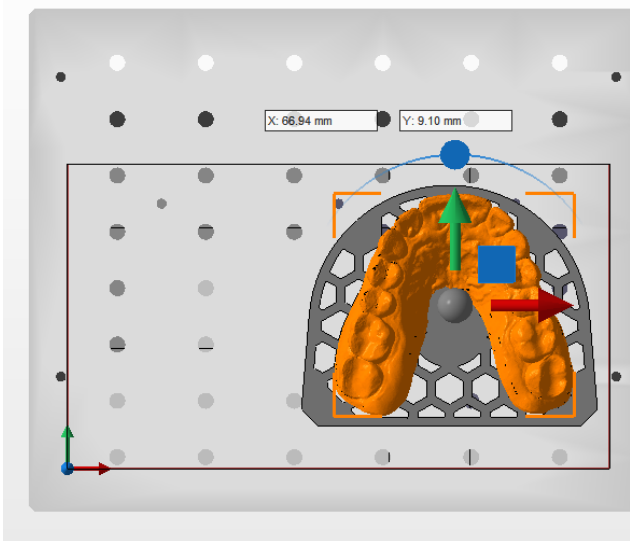
1. Netfabb software

- Open Netfabb software.
- Upload your model and the model plate.

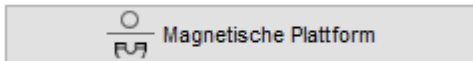


- Chose the view from above, place the model over the model plate and position it in the centre.

Frontside



- Now the model must be lifted by 5 mm. Important: previously deactivate the magnetic building platform.



- Use the "Move" button to lift the model in Z by 5 mm.



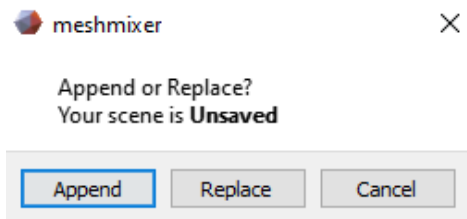
Verschieben

- Now you can create your printing object and proceed as normal.

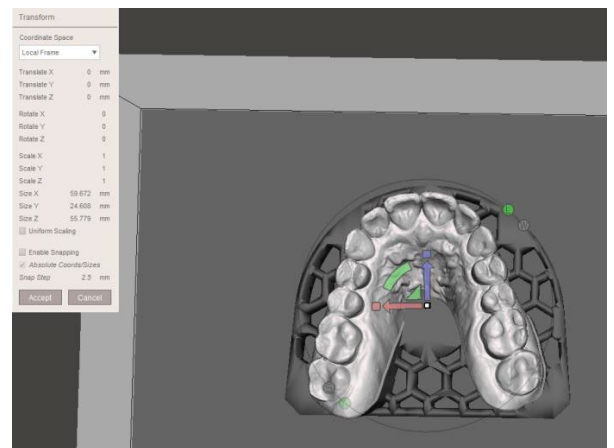
2. Mesh mixer software

Mesh mixer is freely available on the internet.

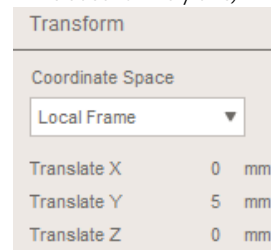
- Open the mesh mixer software.
- Upload your model and the model plate.
The "Append" button loads both objects in a scene.



- Position the model on the model plate and align it:
- Select the model from „Object Browser“.
- Click on „Edit“, and then „Transform“.



- Now the model has to be lifted by 5 mm.
- In the menu „Transform“ you can exactly type in 5 mm (like in this case for the y axis).



- Now you can chose both objects from „Object Browser“and combine both via the push button.
- You can now export the melded element and load it into the slicer software of your printer.

3. Windows 3D Builder Software

Windows 3D Builder is a standard part of the Windows Suite as per Windows 10.

- Open the Windows 3D Builder Software.
- Upload your model and the model plate.

SHERAprint-plate

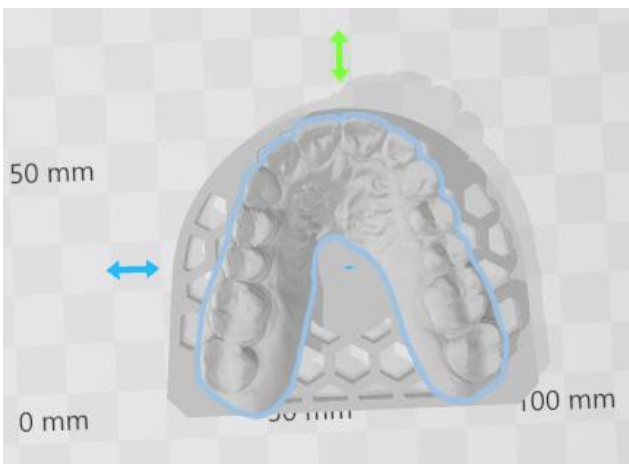
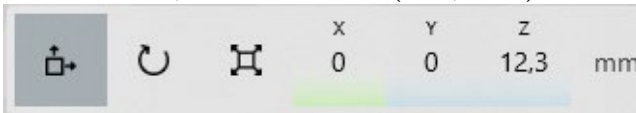
INSTRUCTIONS FOR USE

Support for combining model and SHERAprint-plate in different software systems

- After each loading of a component, confirm your selection via the button "Import model".



- Upload the next element.
- Position the model on the model plate and align it
In order to do this, use the lower button (Move, Rotate).



- Now the model has to be lifted by 5 mm.
Use the push button „Move“.
- Add 5 mm to the mentioned data of Z axis (here: from 12.3 mm to 17.3mm).
- Select both objects by clicking with the help of "Ctrl" and left mouse button.
- Clicking on the 3-stroke button you can now save both objects as an STL, then you can load them in the slicer of your printer.



4. Warranty

SHERA Werkstoff-Technologie GmbH & Co. KG is certified according to DIN EN ISO 13485 and guarantees for the products, due to a thorough quality control system, a flawless quality of its products. Our instructions for use are based on the results of our test laboratory. The technical data given can only be guaranteed if the processing is carried out as mentioned. The user is self-responsible for processing of the products. We are not liable for faulty results as SHREA has no influence on the processing. Nevertheless possibly arising claims for damages relate to the value of the products only.